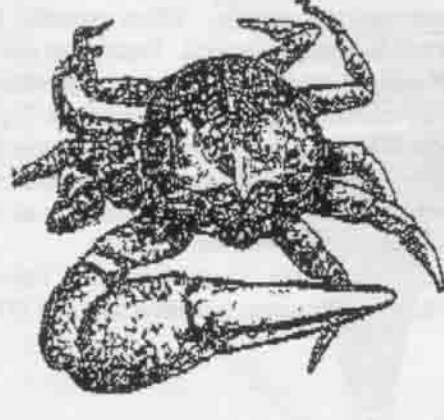
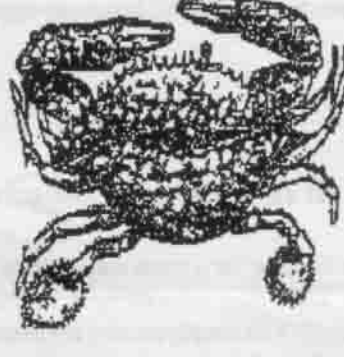




Editor: Dennis K. Lieu
Dept. of Mechanical Engineering
University of California
Berkeley, CA 94720
Phone: (510) 642-4014 (voice)
(510) 643-5599 (fax)
e-mail: dlieu@euler.berkeley.edu



March Meeting:
The Annual Crab Feed



Date: Thursday, 18 March 1993
Location: Room 120 Bechtel Engineering Center
University of California, Berkeley
(North-East side of campus)
Menu: Dungeness Crab, all you can eat
Pasta Salad
French Baguette
Ice Cream
Time: 6:00 PM Social hour
7:00 PM Dinner
8:00 PM Program
Cost: \$25 ASME members
\$28 Non-members
\$10 Student Members
\$13 Student Non-members
RSVP: S.F. ASME
(415)721-4478
RSVP before 12 March 1993

Featuring:
Joint meeting with the UC Berkeley ASME Student Section.
Presentation of the Farber Scholarship awards to students from UC Berkeley, SF State, and Cal Maritime Academy.
and ...

Prof. Lee Hornberger
from Santa Clara University

The speaker for the March meeting will be Prof. Lee Hornberger from Santa Clara University. Prof. Hornberger will speak on the topic of plastic recyclability. The emphasis of her talk will be on the status of plastics recycling, specific problems that are involved, and their possible solutions. Her research has been focused on one specific solution. She will also discuss the use of foam packaging for products such as computers and VCR's.

The crab feed has been an annual event since... (well, who can remember that far back). It is hosted by the UC Berkeley Student Section of ASME, whose member prepare and serve the dinner. It is one of the most popular ASME events of the year for both the local student and professional sections.

Message from the (Vice) Chair...
Meet our students, help our students

While Rich (who is on vacation) is out playing around, he left me with the task to write the "Message from the Chair". This is a great opportunity to talk about one of my favorite subjects -- STUDENTS! It's time once again for the annual Crab Feed in Berkeley, put on by the ASME Student Section. This is an occasion not only to wear a bib, but to interact with the future of our profession. In a RUT!? Get out of it by talking to people with real enthusiasm for engineering. Please join us in a great evening!

One of the major charters for ASME is Student Activities. The SF Section sponsors 3 schools: UC Berkeley, SF State, and the California Maritime Academy. We have a student fund that directly supports their programs (i.e. HPV) and helps subsidize their participation in our programs. We also provide scholarships to all 3 schools each year from the Farber Fund. The interest earned on these accounts has always been a major help. You all know what's happened to that source. The coupon with this newsletter will make it easy to help. Times are tight, but it is worth for the students. Your assistance will be greatly appreciated. Thank you.

Bill Nott

Young Engineers Forum at WAM

As part of the public events at WAM, ASME is holding the Young Engineers Forum (YEF) on Sunday, 28 November 1993 in the New Orleans Hilton, New Orleans, Louisiana. The Forum, designed for young engineers with 0-10 years experience, is intended to provide technology transfer at an appropriate level and answer questions about education, career advancement, and opportunities in new and different areas. The YEF is also an ideal place for young engineers to make contacts in industry and among peers.

The presentation format of YEF sessions consists of case studies and panel discussions on practical "on the job" experience. There will also be a reception where the presentors make themselves available for informal discussions. When possible, the presentors themselves will be young engineers. Topics that will be addressed at YEF '93 include the environment, transportation, computers, and sessions relevant to the WAM Highlight Topic, "Managing Technological Risks." Plans are also underway for "hot topics" pertaining to the New Orleans area, perhaps concerning the engineering behind such New Orleans landmarks as the Water Board's pumps and/or the SuperDome.

For more information about the Young Engineers Forum, contact Elio Manes, Technical Program Administrator, At (212) 705-7797.

Call for ASME Company Reps

Are you looking for a great way to help ASME? You can do it with very little time commitment by becoming a Company Representative!! You simply receive information on ASME events and publicize it to other interested members of your Company, or become more actively involved as a member of the San Francisco Section's Industrial Relations Committee. If you're enthusiastic, looking for a way to help the engineering community, or simply willing to lend a hand, please call Marco Bruzzano at (510)242-1604, or write c/o Chevron U.S.A. Richmond Refinery, 841 Chevron Way, Richmond, CA 94802-0272. Thank you.

ASME Auxiliary Tour

The ASME Auxiliary San Francisco Section (includes Santa Clara and Mt. Diablo Sections) will have a tour of the restored Palace Hotel in San Francisco with luncheon to follow in the Garden Court. 9 March 1993 at 10:30 AM. For details and reservations please call Mrs. Benjamin Beam (408)732-3084 or Mrs. Wm. Chamberlin (408)269-2331

Call for Mentors

Mentors are needed at Oakland Tech High School's Pre-Engineering Academy. The commitment is to meet once a month with a sophomore until the end of the school year, be a big brother/sister to him/her, provide encouragement, guidance, answer questions about college, work, etc. For more information, call Anne Lau, Industry Liaison, Oakland High School District, (510)655-8724.

Serve as a Session Aide ...
Attend a Conference Free

ASME and the Japanese Society of Mechanical Engineers (JSME) are sponsoring the International Conference on Nuclear Engineering on 22-24 March 1993 at the Hyatt Regency at Embarcadero Center (San Francisco). As the local host section, we will be providing session aides to assist ASME/JSME staff with speaker A/V needs, distribution and collection of evaluation forms, session poster placement, etc. Volunteers are needed. In exchange for serving as an aide, ASME/JSME will waive that day's registration fee. Half-day slots are available on Monday afternoon, 22 March, Tuesday morning and afternoon, 23 March, and Wednesday morning and afternoon, 24 March. To get a copy of the conference agenda and/or sign up, call Don Moseman at (415)973-9701. Session assignments are made on a first-come, first-serve basis, so call early to get your preference.

Interested in a P.E. License?

The Mt. Diablo Section is trying to encourage mechanical engineers to obtain their Professional Engineer's (PE) License. The hope is to organize special classes, and/or create study groups. If you are interested in getting the Engineer-In-Training Certificate or the PE License, and want to find out more, please write to Bill Nott, 18316 Maffey Dr., Castro Valley, CA 94546-2217.

San Francisco State University Offers Free Energy Audits

Thanks to a contract with University City Science Center, of Philadelphia, under the auspices of the Department of Energy, SFSU's Division of Engineering will soon be offering a free new service to small and medium sized manufacturers. Under this program, engineering faculty and student teams in the newly created Energy Analysis and Diagnostic Center (EADC) conduct energy audits for interested manufacturers. The teams conduct one day visits at a mutually agreeable time, look at the plant's processes, and perform measurements related to energy usage. Following an analysis, the team prepares a report recommending ways to reduce energy consumption, including estimated costs and payback period for implementation. Clients do not have to pay for this service and are under no obligation to implement the recommendations.

This service is intended solely for small to medium sized manufacturers within 150 miles of San Francisco with fewer than 500 employees and less than \$75,000,000 gross sales per year for a given plant. The manufacturer's energy bill must be \$1.75 million or less and there must be a lack of in-house energy expertise at the plant. If firms meet three of these four criteria, they are eligible for this service. This program is not intended to duplicate similar services available from other sources. There are 21 other EADC's in operation across the country at universities with ABET-accredited engineering programs. In addition to providing a service to manufacturers, the EADC program is designed to enrich the educational experience of engineering faculty and students by involving them with industry. For information on EADC, call (415)338-6218, or write to the administrator, Ron Trauner, at the following address: Energy Analysis and Diagnostic Center, Division of Engineering, San Francisco State University, 1600 Holloway Drive, San Francisco CA 94132.

detach here

Election Ballot:
1993-1994 Executive Council, ASME San Francisco Section

Chair: Willard (Bill) Nott
Secretary: Eric Broadhurst
Vice-Chair: Donald Moseman
Treasurer: Stefan Wagner

Please check one candidate for each office. Return in a sealed envelope to:
Prof. Dennis K. Lieu
Chair ASME SF Section Nominating Committee
5128 Etcheverry Hall
University of California
Berkeley, CA 94720

Annual Section Dues Donation

It is time once again for the annual dues donation. Each year, the San Francisco Section collects a dues donation to aid with the daily operation of the section. Additionally, you may choose to add an additional donation to support the section's student related activities. Please check the appropriate items below. Your generous support is sincerely appreciated.

Annual Dues Donation: \$10 \$20 \$30 Other
Additional Donation to Student Fund: \$10 \$20 \$30 Other
Additional Donation to Farber Scholarship Fund: \$10 \$20 \$30 Other

Total Enclosed \$
Please do not send cash.
Make checks payable to: ASME San Francisco Section
Return in a sealed envelope to:
ASME San Francisco Section
c/o Prof. Dennis K. Lieu
5128 Etcheverry Hall
University of California
Berkeley, CA 94720

1992-1993 San Francisco Section Executive Council

Chair: Richard J. Myhre, PE
Secretary: Donald W. Moseman
Vice Chairmen: Willard A. Nott, PE
Treasurer: Eric L. Broadhurst
History and Heritage, Honors and Awards, Professional Practice and Ethics: Eric Worrell, PE
Unemployed Members: Lynden Davis, PE
College Relations: Ahmad Ganji, PhD

JOB BULLETIN 1-800-624-9002
MEMBERS
Looking for a job? Contact the ASME Western Regional Office to obtain a copy of the Job Bulletin.
COMPANIES
Looking for mechanical engineers? Contact ASME Western Regional Office to place a free listing in the Job Bulletin, or to obtain information regarding advertising in Mechanical Engineering magazine.

San Francisco Section Executive Council meetings are held at 6:15 PM the first Wednesday of each month, September through May. The location is the offices of Bevilacqua-Knight (BKI), 501 14th Street, Suite 210 (second floor), Oakland. BKI is in the Oakland City Center complex next to the 12th Street BART station. Validated parking is available in the City Center garage. All members who are interested in helping organize events for the San Francisco Section are invited to attend.
Advertising Space Available
This newsletter is published monthly, and reaches approximately 1500 professional and 250 student members. \$200 Full page, \$100 1/2 page, \$50 1/4 page, \$20 business card, \$10 25 word classified. Contact Dennis Lieu (510) 642-4014