

# SAN FRANCISCO SECTION THE AMERICAN SOCIETY OF MECHANICAL ENGINEERS



NOVEMBER 1977

NEWSLETTER

RAY RAHN 415/781-4211 Editor

## SECTION NEWS

### CHAIRMAN'S NICHE

University Affairs Committee work is one area that has been of great interest to me. The Bay Area universities graduate hundreds of new mechanical engineers yearly. When the student graduates, we will expect him to become a productive member of our profession. By the time he graduates, each new engineer should be a student member of the ASME. This should not be because it looks good on a resume or because it might magically open some employment door, but rather the student should have been taught since he was a freshman that he is studying to enter a profession and the ASME is his professional organization. But it doesn't happen this way. The only link that a student has with his future profession is through the student branch of the ASME.

Unfortunately, I have watched one ASME student section reach a point where there wasn't enough student interest to cause an election of new student section officers. Another student section could benefit by having a working engineer as a member of our University Affairs Committee to work with it. We are also watching the formation of a third student section in the San Francisco section. It will be located here in San Francisco at Cogswell College. These future engineers will be graduates from an accredited 4-year Engineering Technology program.

If there are any engineers who would be able to spend a couple of hours a month working with student engineers, please contact:

Mr. Donald A. Parker — Hexcel Corporation  
1711 Dublin Blvd., Dublin, California 94566 — (415) 828-4200, extension 264.

If you can't reach Don, please contact me:

Mr. John W. Sale — Pacific Gas and Electric Company  
77 Beale Street, Room 2677, San Francisco, California 94106 — (415) 781-4211, extension 1896.

### SAN FRANCISCO SECTION NOVEMBER MEETING

Date: November 17, 1977 Place: Engineers' Club, 160 Sansome Street, San Francisco  
Cocktails: 6:30 Dinner: 7:30 Price: \$7.75/person

Subject: SOLAR ENERGY DEVELOPMENT

Donald A. Parker  
Hexcel Corporation — 1711 Dublin Boulevard, Dublin, California 94566

Basic to the understanding of the solar energy industry is the understanding of where and when solar energy equipment can play a legitimate part in supplying energy for a particular need. Hexcel's contribution to this field has been the development of different products for solar energy application, particularly a solar parabolic concentrator. Two solar energy applications where Hexcel has played a part have been solar irrigation and solar cooling.

For reservations call: Del Whipple, Ph: 835-3000, ext. 456, before November 14th.

### WOMEN'S AUXILIARY

The Women's Auxiliary will hold their Annual Scholarship and Student Loans Fund Raising Event on:

NOVEMBER 12, 1977.

Place: Club Tanglewood in Tanglewood Townhomes.

Location: On Adamo Drive off Pearle Avenue near Branham Lane in San Jose. (Got that?).

Price: \$7.50 per person

Reservations: On or Before November 5, 1977

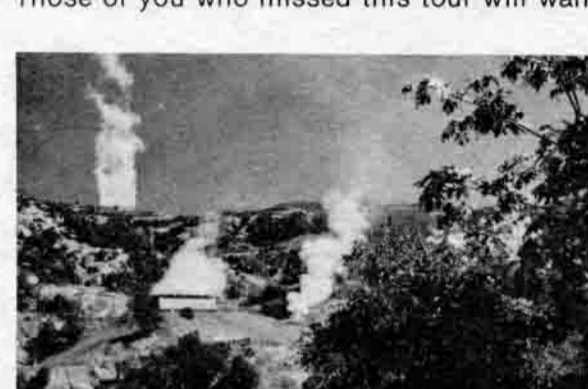
PHONE:

(Peninsula) Mrs. K.E. French (Stella) Ph: 736-8974  
(East Bay) Mrs. Richard Bain (Barbara) Ph: 284-4263

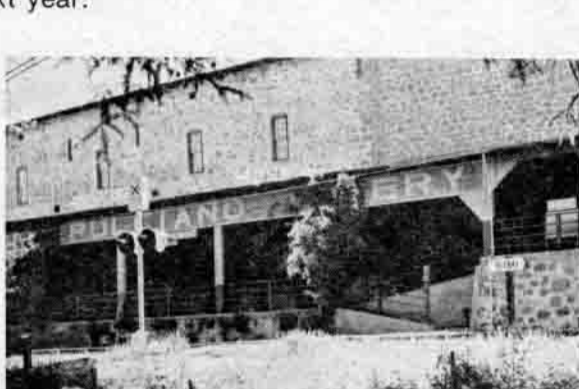
### IN RETROSPECT

55 members and friends toured PG&E's The Geysers power plants and SIMI winery during our September outing. The picture on the left shows steam and vapor plumes rising into the dark blue sky at The Geysers. On the right an exterior view of SIMI winery is pictured. Both tours were scenic and relaxing.

Those of you who missed this tour will want to catch it again next year.



The Geysers



SIMI Winery

### IS YOUR ASME MAIL BEING SENT TO THE CORRECT ADDRESS?

If your ASME mail is being sent to the wrong address, or if it is coming to your home and you wish to receive it at work, please contact Ray Rahn. He has change of address forms which will minimize hassels with the New York computers. Call Ph: 781-4211, ext. 3409 to receive your form.

Note also that the address your mail is sent to determines which ASME Section you belong to. If your mail is sent to Concord, your membership is automatically assigned to the Mt. Diablo ASME Section. If your mailing address is Palo Alto, your membership is automatically assigned to the Santa Clara Valley ASME Section.

If you wish to belong to or remain in the San Francisco ASME Section, make sure your mailing address is in the crosshatched area of the map shown.



### CONTINUING EDUCATION

#### SAN FRANCISCO SECTION:

The following programs may be of interest to the members. I have copies of the announcements if you are interested:

- Master of Business Administration, University of California, Berkeley. Classes are held at Hastings Law School in San Francisco. Fees: \$129.50 per quarter, for California residents, regardless of the number of units for which the student is registered.
- The Art of Negotiating, Management Research Corporation. The Seminar will be held in San Francisco on December 8-9, 1977 at the Hyatt on Union Square. Fees: \$450.00 per person.

If you would like additional information on these programs or if you know of any programs that would be of interest to the members, please let me know.

R.N. Sykes (221/5/A13) — Bechtel Power Corporation  
P.O. Box 3965, San Francisco, CA 94119 (768-2423)

#### U.C. BERKELEY:

#### Continuing Education Program for Engineers has New Chairman

John E. Schremp has been named chairman of Continuing Education in Engineering at University of California Extension, Berkeley.

The department presents intensive short courses, seminars, workshops and evening classes in a broad range of subjects for engineers and allied professionals.

The new position is in addition to Schremp's present responsibilities as coordinator of continuing education programs for UC's Institute of Transportation Studies, also based at the Berkeley campus.

Announcement of the appointment was made by Milton R. Stern, dean of UC-Berkeley Extension.

Schremp succeeds Raymond A. Grassi, professor of industrial engineering and operations research at Berkeley, who is returning to full-time research and teaching.

A graduate of the U.S. Military Academy at West Point, Schremp served with the U.S. Army from 1941 to 1967, retiring with the rank of Colonel. He holds a master's degree from the Massachusetts Institute of Technology and is presently working toward a doctorate in engineering at Berkeley.

During his military career his assignments included the planning and construction of airfields during World War II, teaching at the Command and General Staff College, and managing a project that developed and produced night vision devices for the Army — an accomplishment for which he was awarded the Legion of Merit.

Among the other posts he held were those of executive officer of the Army's Directorate of Research, second in command of the Missouri River Division of the corps of Engineers and commander of the Ninth Logistical Command in Thailand.

Following his retirement from the service he held positions with International Telephone and Telegraph and Xerox's Electro Optical Systems before coming to the University in 1971.

Continuing Education in Engineering, one of six departments at UC-Berkeley Extension, offers courses in a variety of formats and subjects, drawing on the expertise of faculty members of the University and other institutions as well as of recognized authorities from research and industrial organizations.

Planned for the near future are short courses in such diverse fields as the design of deep-sea oil-production structures, advanced techniques in planning systems for electrical power generation, solar energy for buildings, computations for producing and using composite materials and value-engineered design and construction.

Evening classes cover a range of subjects in civil, chemical, electrical and mechanical engineering and in materials science. Also offered are review classes for persons preparing to take professional registration examinations.

The department's courses are held at the Berkeley campus of the University and at other locations in the San Francisco Bay Area.

The department is located at 2223 Fulton Street on the UC-Berkeley campus. Information about its courses may be obtained by writing to Continuing Education in Engineering, University of California Extension, Berkeley, CA 94720, or by calling (415) 642-4151.

### SANTA CLARA VALLEY SECTION NOVEMBER MEETING

Date: November 11th Time: 6:45

Place: Main gate of the General Motors Plant in Fremont off Freeway 17.

Dinner: Cafeteria Assistant at the Plant Cost: \$5.50

Program: Harry Lyon, Chief Engineer, Oldsmobile Division, Oldsmobile Division, General Motors.

Mr. Lyon will talk about the new Oldsmobile Diesel Engine. He will be driving a car equipped with this engine up from Los Angeles.

For reservations call: Ph: 574-5200 before November 4th.

### — EMPLOYMENT OPPORTUNITIES —

Companies are working with our ASME Section to help make the Newsletter self-supporting. In return, the Newsletter will be recognizing those companies.

Lasik and Mycoff Associates, Inc. will be sending us current employment opportunities to be published. If you are looking for employment please consider the opportunities listed below.

Client: Investor owned Utility

Location: Midwest

Position: Manager Plant Design — Will direct and manage a staff of engineers for design of new fossil generating stations. Will provide guidance and interface with A/E firms. Requires BS Engr., 10+ yrs. experience in design supervision for fossil central stations. Salary to low 30's.

#### EMPLOYMENT OPPORTUNITIES (Continued)

Client: Nationally recognized A/E firm

Location: Suburban Upper Midwest

Position: Principal Mechanical Engineer — Will function as Group Leader over HVAC and Fire Protection Engineering for nuclear and fossil central stations. Requires a BSME, PE and minimum of 5 yrs. supervisory experience. Salary may range to high 30's.

Client: Investor owned Utility

Location: Northern Rocky Mountain region

Position: Manager of Plant Operations — Will supervise 3 plant superintendents for operations of several coal fired generating stations. Salary to high 30's.

For more information, write:

Frank Lasik  
P.O. Box 26320 B, Denver, Colorado 80226

or call Frank at Ph: 800-525-9082.

### PROFESSIONAL REGISTRATION

#### E-I-T & P.E. REVIEWS FOR ENGINEERS

If you are preparing for the April 1978 Professional Engineering or Engineer-In-Training Examination, you should attend a no-cost, no-obligation question and answer session to be held at 7:00 on December 20 in the Business School Building of Menlo College in Menlo Park.

The Session, which will cover the contents of the Examinations and outline effective preparation procedures, is presented by the Professional Engineering Registration Program as an introduction to its P.E. and E-I-T Review Courses which begin the first week of January.

Courses in the Program are sponsored by the Peninsula Chapter of the California Society of Professional Engineers and meet one each week from 7:00 til 10:00 P.M. for 14 weeks, finishing just before the April Exams. One Professional Engineer teaches each course.

To reserve your place at the Introductory Meeting or to obtain more information, call (415) 593-9731 during business hours.

### "LAW AND THE ENGINEER" THEME FOR

#### 1977 ASME WINTER ANNUAL MEETING

NEW YORK, NY — "Law and the Engineer" will be the theme of the 1977 Winter Annual Meeting of the The American Society of Mechanical Engineers. It is being held in Atlanta, Georgia, November 28 - December 2 at the Hyatt Regency and Atlanta Hilton Hotels.

Over 160 technical sessions will be offered to the 3,000 engineers expected to attend. Some of the topics that the technical program will cover include: designing noise out of products; progress in railway technology; air pollution control; the engineer as an "expert witness"; bio-technology; cryogenics; nuclear reactor safety; and transportation safety.